



**FEATURED PRODUCTS**

## PALLET ADVANTAGES

Environmentally Friendly  
ISPM 15 Exempt  
Long Service Life



**EASY CLEAN**



**SANITARY**



**IMPACT RESISTANT**



**RECYCLABLE**



**PERFORMANCE ENHANCEMENT**

- Cargo Belts & Buckle | Locking Options
- Substrate Insertion
- Nestable
- Leg Drain Holes
- Ergonomic Hand Holes
- Secure Stacking



**IDENTIFICATION**

- Custom logos | Coditherm Stamping
- Multiple Stripe Options: Location, Size & Color
- RFID | Barcoding
- Labels and Decals



## DISTRIBUTION SERIES PALLETS

High density polyethylene (HDPE). Twin sheet construction.

Model	Outside W x L	Outside Height
HEAVY DUTY PALLET (Formerly DC6U 4048)	40" x 48"	5.25"
ECONOMY PALLET (Formerly DC1 4048NLT)	40" x 48"	5.25"
INDUSTRIAL PALLET (Formerly DC4 4048)	40" x 48"	6.375"
INDUSTRIAL PALLET (Formerly DC4 4248)	42" x 48"	6.5"
INDUSTRIAL PALLET (Formerly DC4V 4048)	40" x 48"	6.313"
LOAD LOCKER BOARD	40" x 48"	2.13"

## TOUGH PALLET

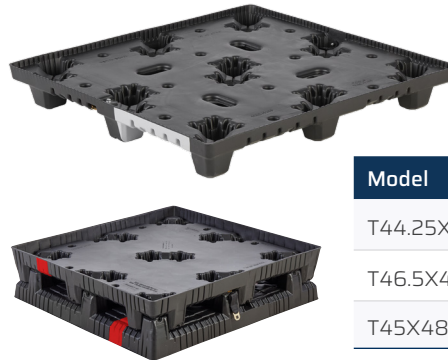
High density polyethylene (HDPE).  
Rackable, single sheet construction.



Model	Outside W x L	Outside Height
TOUGH PALLET	40" x 48"	5.25"

## AUTOMOTIVE PALLETS

High-density polyethylene (HDPE).  
Twin sheet construction for durability and long life.



Model	Outside W x L	Outside Height
T44.25X48	44.25" x 48"	5.63"
T46.5X49.5	46.5" x 49.5"	7.63"
T45X48	45" x 48"	6.63"

## RACKABLE PALLETS

High-density polyethylene (HDPE).  
Heavy duty injection molded pallet.

Model	Outside W x L	Outside Height
GS40X48 RACKABLE	40" x 48"	6.00"
GS1100X1200	1100mm x 1200 mm	5.75"
GS 48X48	48" x 48"	6.00"



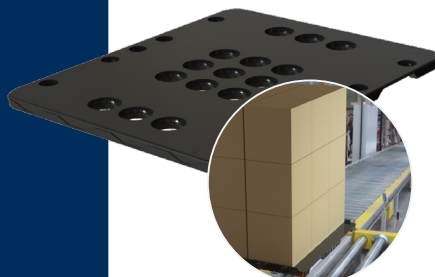
## AUTOMATED STORAGE AND RETRIEVAL SYSTEMS

High-density polyethylene (HDPE). Twin sheet construction for durability and long life.

Model	Outside W x L	Outside Height
SYSTEMS BOARD	40" x 48"	2.625"

Heavy duty injection molded 3 runner pallet.

Model	Outside W x L	Outside Height
GS40483R3	45" x 32"	5.5"

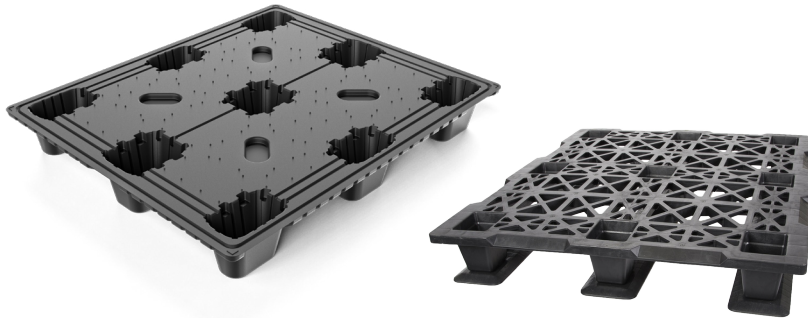


## BIG PAK® SLEEVE PACKS

High density polyethylene (HDPE). Lightweight for better ergonomics. Nestability minimizes storage space and reduces shipping cost. Sleeve options: corrugated, plastic corrugated, and twin sheet thermoformed.



Model	Outside W x L	Outside Height
BP4048B SP	40" x 48"	6.38"
BP4448B SP	44" x 48"	6.125"
BP4454B SP	44" x 54"	6.375"
BP4548 SP	45" x 48"	6.625"
BP4048 W DTP DTC	40" x 48"	5.575"
BP4048 W TP TC	40" x 48"	6.125"



## ONE WAY PALLETS

High-density polyethylene (HDPE). Twin sheet construction for durability and long life.

Model	Outside W x L	Outside Height
GS40X48 EXPORT (*INJECTION MOLDED)	40" x 48"	5.50"
ONE WAY PALLET	40"X48"	5.25"

## AIAG STANDARD WHEEL PACKS

Compatible with conveyor systems and automated material handling devices. Pallets, trays, and caps are designed to nest for low cost storage and return. Trays available for raw castings and fully machined wheels. Standard sizes available for commercial and passenger vehicles. Custom stripe and sheet color options available.

Model	Outside W x L	Outside Height
PROUD WHEEL	48.625" x 78"	5.75"
PC SERIES	53" x 44"	5.00"
CH 20,000 SERIES	47.25" x 70.75"	5.25"
CH 30,000 SERIES	52.25" x 83.5"	6.50"



\*More sizes available.



## ELECTRIC VEHICLE BATTERY PACKAGING

As a long-time leader in material handling solutions for the automotive industry, we are revolutionizing plastics packaging once again with the development of our series of battery packs.

Model	Battery Type
LITHIUM ION BATTERY PACKS	Lithium Ion Cells
BATTERY MODULE PACKS	Lithium Ion Modules
COMPLETE BATTERY ASSEMBLY PACK	Complete Battery Platform
REMANUFACTURED BATTERY PACK	Remanufactured Components
STANDARD CAR BATTERY PACK	Standard Car Batteries





## CARGO PROTECTION SYSTEMS

Cargo Protect+ fills voids and secures loads shipping by truck, intermodal, and rail. Reusable and recyclable system.

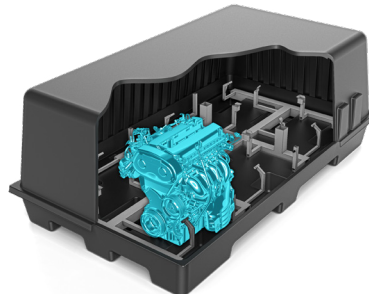
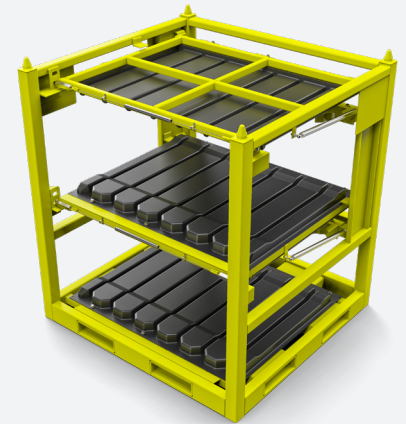
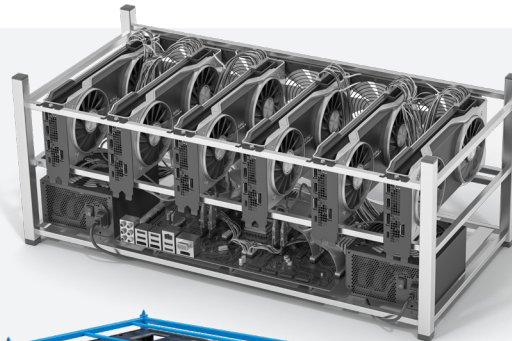
Model	Outside W x L	Outside Height
4-96 VOID PANEL	96" x 48"	4.00"
2-102 VOID PANEL	102" x 30"	2.00"
1618 LATERAL VOID FILLER	96" x 40"	9.00"
1420 LATERAL VOID FILLER	62" x 36"	10.0"
TRUCK BULKHEAD SPACER	48" x 36"	16.0"
RAIL BULKHEAD SPACER	102" x 39"	16.5"



## METAL RACKING

### STEEL RACKING FOR AUTOMOTIVE COMPONENTS

TriEnda's custom racks are designed to accommodate heavy loads, such as engines, and transmissions, safely and efficiently. With TriEnda's extensive design and engineering capabilities we can create a solution that meets the needs of your next project.



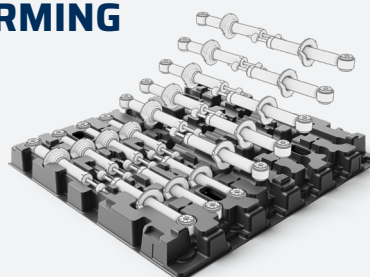
## POD CONTAINERS

### ENGINE, TRANSMISSION, HVAC PACKS

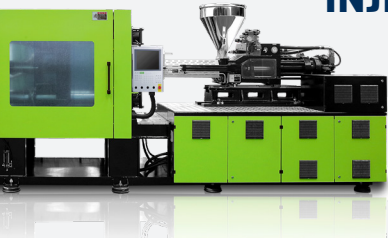
Fully enclosed protection from water, dirt and debris. Custom inserts and hardware ensure your components are safe during transit. Nesting capabilities for better return ratios. Lower cost and weight than steel containers.

## CUSTOM PACKAGING AND THERMOFORMING

Designs built to customer specifications. Innovative protection using custom materials to overcome packaging challenges. Our custom blended plastics optimize performance to meet weight and performance requirements.



# INJECTION MOLDING CAPABILITIES



When highly detailed parts are a design priority, TriEnda's injection molded components seamlessly integrate into our large-format thermoformed packaging solutions.

CENTRALLY LOCATED	TWO 1,760 TON MACHINES
TWO 60,000 FT <sup>2</sup> BUILDINGS	ONE 2,200 TON MACHINE
MOLDED PARTS UP TO 100LBS	ONE 3,000 TON MACHINE
250 EMPLOYEES	TEN 3,300 TON MACHINES

We are dedicated to delivering **the highest quality products and upgrading the experience for our customers**. Utilizing cutting-edge processes for material compounding, extruding sheet, and thermoforming, TriEnda is able to meet your product demands, on time and on budget.

## CUSTOM RESIN BLENDS

Proprietary resin custom blends: HDPE, TPO, ABS, GFPP, PC/ABS, LLDPE, PET and TPU. Sophisticated hardware and software for material composition testing. Volumetric blenders support each line for enhanced blending capabilities.

## EXTRUDING EXCELLENCE

In-house extrusion with single and multi-layered co-extrusion and lamination capabilities. Forming gauge/material thickness .060-.450.

## THERMOFORMING

Single and twin sheet construction capabilities. Platen size capacity - the largest in the industry.

## INJECTION MOLDING

While thermoforming is our main focus, we offer a variety of injection molded products.

## ASSEMBLY

All locations provide a wide range of capabilities to assemble simple to complex components.

VERTICAL INTEGRATION APPROACH TO MANUFACTURING



## ENGINEERING + DESIGN

The largest engineering team in the industry with diverse experience not only in thermoforming plastics but also component design and mating accessories.

## PROTOTYPING

Reduce development time and cost with our dedicated sample machine.

## MACHINE TOOLING

In-house tool shop supports overall plant efficiency.

## TESTING

TriEnda continues to develop useful rating methods. The eight ratings used in test methods are: floor, fork, rack, conveyor, slip resistance, durability, pack, and life cycle.

# GLOBAL PRESENCE



Strategically located manufacturing footprint in North America and key sales offices in North America and Europe.

- Portage, WI, USA
- Bettendorf, IA, USA
- Arlington, TX, USA
- Lerma, Mexico

# FOCUSED ON SUSTAINABILITY



Serving proudly as an industry leader to develop procedures and best practices for environmental responsibility and sustainable material handling solutions.

# COMMITMENT TO QUALITY



Award-winning process and design solutions including patents for several innovative and cost-effective products. Committed to quality and proud to be ISO 9001:2015 Certified.

TriEnda Holdings, LLC  
N7660 Industrial Road  
Portage, WI 53901

1-800-356-8150 | [WWW.TRIENDA.COM](http://WWW.TRIENDA.COM)

