

# GS 45x48

## Heavy Duty Pallet & Lid

Injection Molded Double Deck Pallet  
Thermoformed Single Sheet Lid

### 01 / Details

Cover

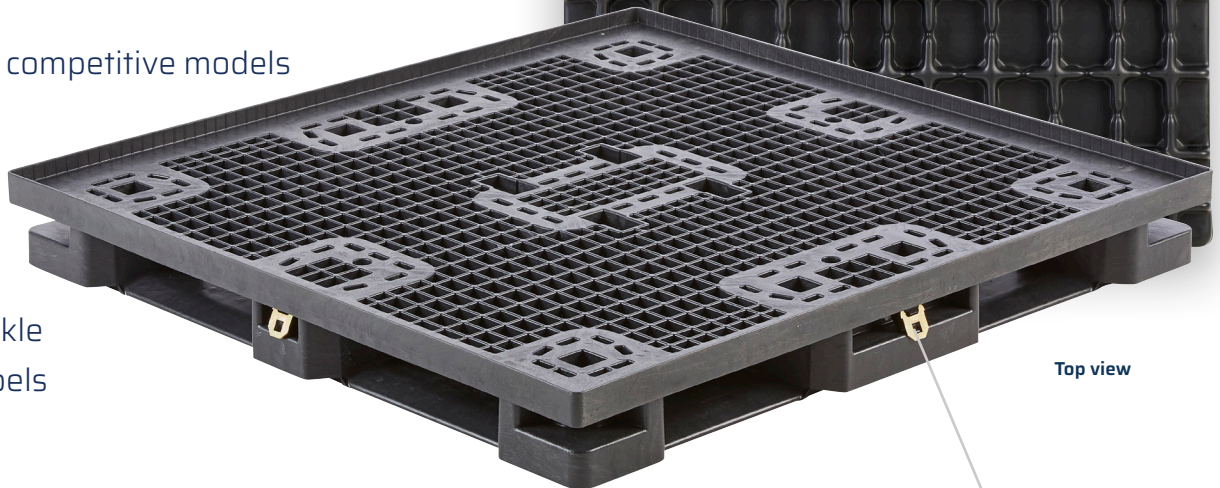


#### FEATURES

- Compatible with competitive models
- Nestable
- Rackable
- Conveyable

#### OPTIONS

- Cargo belt & buckle
- Identification labels
- Coditherm



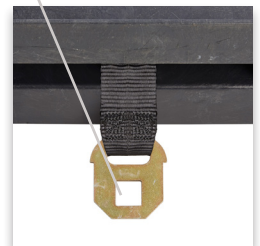
Top view



Nestable Design



2" Webbing/ 59" Min. Length Easy Grip Loops



Locations Available in Length and or Width

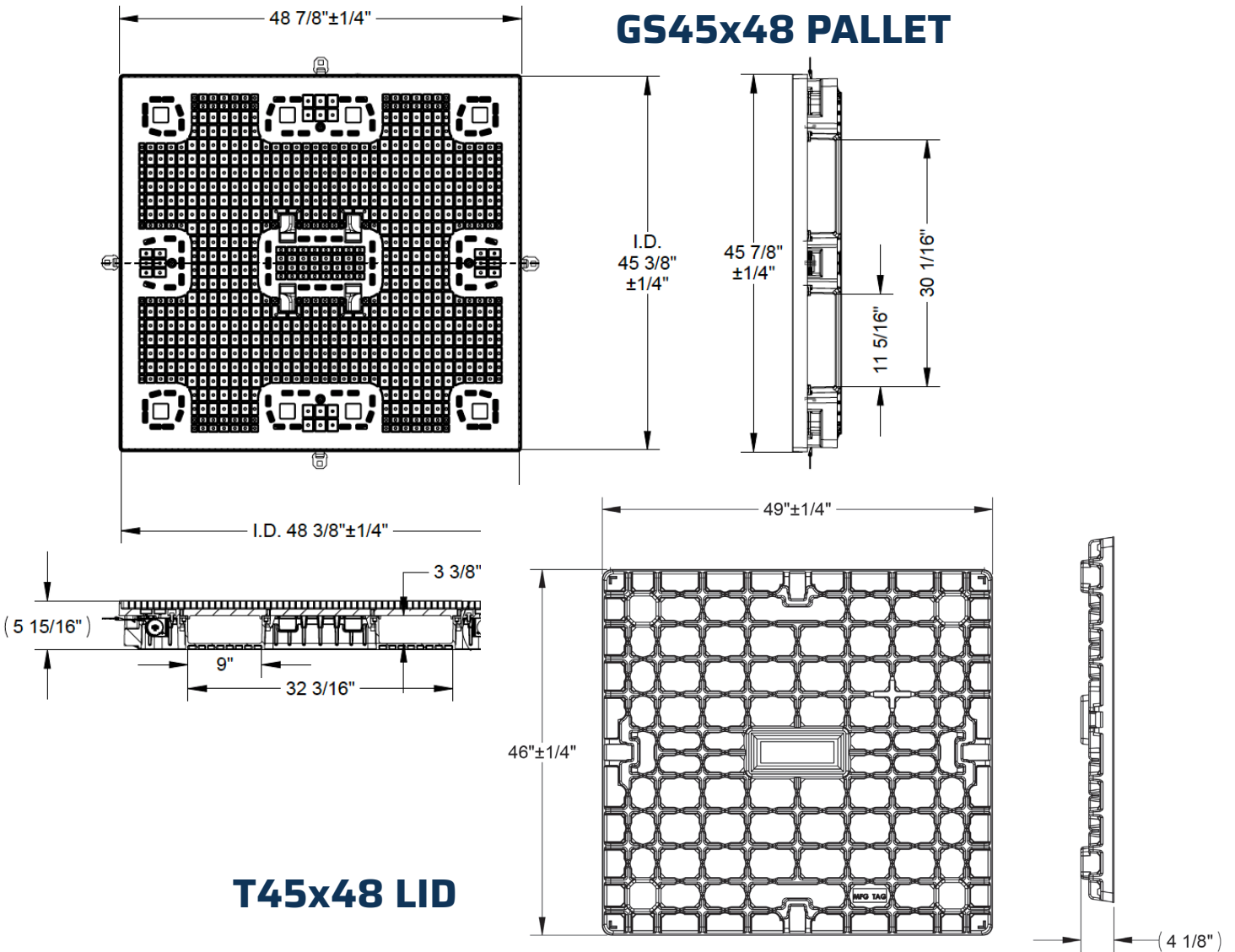
### 02 / Specifications

PRODUCT	DESCRIPTION	DIMENSIONS			WEIGHT	COLOR	RATINGS		PALLET PER STACK	STACKS PER TLD	QTY 53' TLD	PARTS PER STACK SC	STACKS PER SC	QTY PER 40' SC
		L	W	H			DYNAMIC	STATIC						
GS 45x48	Injection Molded Pallet	48.88" 1,242 mm	45.88" 1,165 mm	6" 152 mm	59 lbs 9.5 kg	Black	6,000 lbs 2,722 kg	40,000 lbs 18,144 kg	20	26	520	17	18	306
T45x48	Single Sheet Lid	49" 1,245 mm	46" 1,168 mm	4.125" 105 mm	18 lbs 8 kg	Black	n/a	n/a	74	26	1,924	74	17	1,258

Performance characteristics vary with applications. To optimize nominal specifications, loads must be evenly distributed to reach capacity. Load construction, support conditions, transportation, load retention, user facility and temperature are factors that affect pallet capacity.

# GS 45x48 Pallet & Lid

## SPECIFICATIONS



### PALLET ADVANTAGES

- Environmentally Friendly
- ISPM 15 Exempt
- Long Service Life



TriEnda publishes standard guidelines for its products, based on its testing standards, and, as such, these guidelines do not constitute any warranty related to each customer's individual application. The material handling industry has not standardized on test methodology and rating criteria for each individual product. All TriEnda products are sold with the understanding that the customer will validate for themselves the suitability of the product for their specific application. As each product application is unique, the customer assumes all risks associated with the determination and actual use of the pallet.

